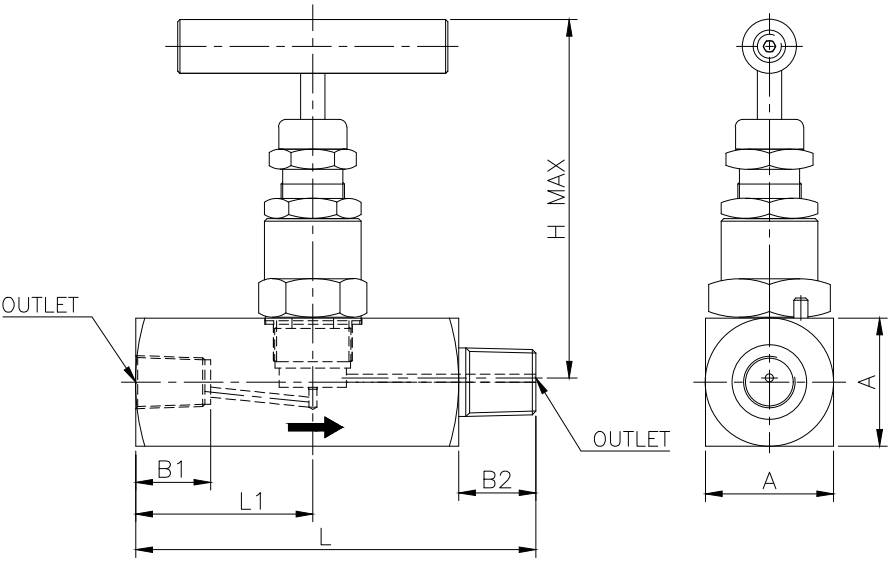


Needle valve : NPT(F) x NPT(M) 3000 / 6000 PSI



Dimensions (in millimeters)

STOCK CODE	INLET	OUTLET	A	B1	B2	L	L1	H
NA04EB04EAH310101	1/4"	1/4"	28	14	14	70	28	90
NA06EB06EAH310101	3/8"	3/8"	28	14	14	70	28	90
NA08EB08EAH310101	1/2"	1/2"	32	19	19	87	34	103
NA12EB12EAH310101	3/4"	3/4"	38	19	19	87	34	106
NA16EB16EAH310101	1"	1"	45	24	24	104	40	132
NA18EB18EAH310101	1 1/2"	1 1/2"	55	24	24	120	48	171
NA19EB19EAH310101	2"	2"	65	24	24	140	58	181

Needle valve : NPT(F) x NPT(M) 10000 PSI

Dimensions (in millimeters)

STOCK CODE	INLET	OUTLET	A	B1	B2	L	L1	H
NA04EB04EAJ310101	1/4"	1/4"	32	14	14	76	34	80
NA06EB06EAJ310101	3/8"	3/8"	32	14	14	76	34	80
NA08EB08EAJ310101	1/2"	1/2"	38	19	19	88	34	96
NA12EB12EAJ310101	3/4"	3/4"	42	19	19	88	37	108
NA16EB16EAJ310101	1"	1"	50	24	24	104	45	130
NA18EB18EAJ310101	1 1/2"	1 1/2"	60	24	24	120	53	162
NA19EB19EAJ310101	2"	2"	70	24	24	140	63	184

Note: All dimensions are subject to change without notice. All dimensions are in millimeters